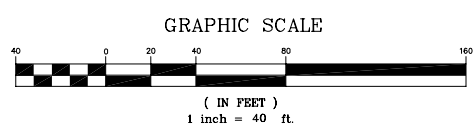
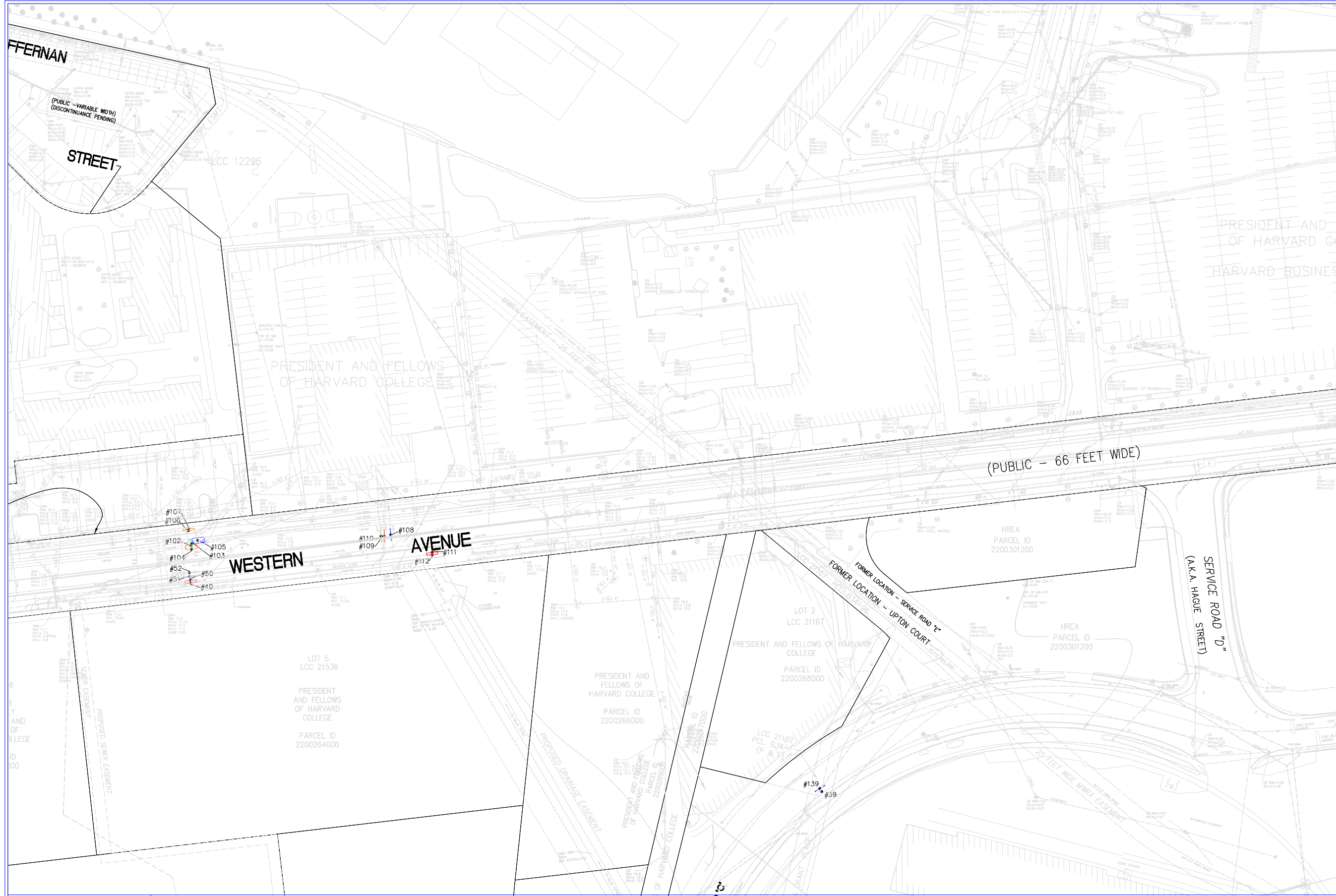




H10	I10	J10	K10		
H11	I11	J11	K11	L11	M11
H12	I12	J12	K12	L12	M12
H13	I13	J13	K13	L13	M13
H14	I14	J14	K14	L14	M14
H15	I15	J15	K15	L15	M15
H16	I16	J16	K16	L16	M16
H17	I17	J17	K17	L17	M17
H18	I18	J18	K18	L18	M18
H19	I19	J19			



USE DISCLAIMER:
"WARNING: THIS DOCUMENT MAY CONTAIN SENSITIVE SECURITY INFORMATION AND THEREFORE MUST BE TREATED AS A CONFIDENTIAL DOCUMENT. THE INFORMATION CONTAINED IN THIS DOCUMENT MUST BE MAINTAINED IN A CONFIDENTIAL MANNER TO PREVENT COMPROMISING HOMELAND SECURITY AS PROVIDED IN SECTION 214 OF THE HOMELAND SECURITY ACT OF 2002. NO PART OF THIS DOCUMENT SHALL BE REPRODUCED, RELEASED OR DISTRIBUTED WITHOUT THE EXPRESS WRITTEN PERMISSION OF HARVARD UNIVERSITY. UNAUTHORIZED REPRODUCTION, RELEASE OR DISTRIBUTION MAY RESULT IN CIVIL PENALTY OR OTHER ACTION BY HARVARD UNIVERSITY."

REVISIONS	
DATE	DESCRIPTION

EXISTING CONDITIONS SURVEY

ALLSTON & BRIGHTON MASSACHUSETTS

Civil & Subsurface Utility Engineers		
BSI Engineering, Inc.		
66 Pleasant Street, Pembroke, MA, 02359-2320		
Telephone (617) 265 4547 Fax (617) 209 1297		
www.bsieng.com		
Scale	Date	Job No.
NONE	AUGUST 12, 2008	ADG ALLSTON
SUE By DOC,IS,CF,DF&GR	Sheet No.	Panel No.
Drawn By SBG	7	K15
Checked By JFN	of 13	
Surveyed By WSP SELLS		